

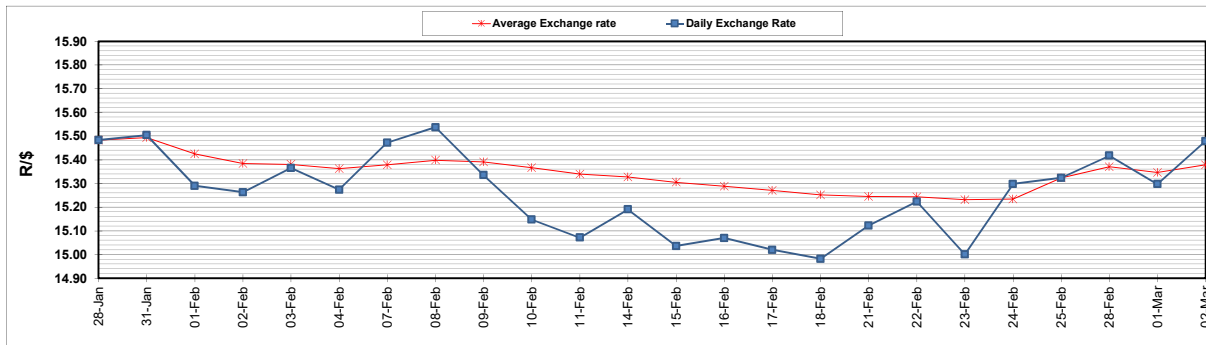
	PETROL 95 ULP	PETROL 93 ULP & LRP	DIESEL 0.05%	DIESEL 0.005%	ILL. PAR.
GAUTENG PUMP PRICE (SA c/l) AS FROM 02/03/2022	2,160.000	2,135.000	-	-	-
WHOLESALE PRICE (SA c/l) AS FROM 02/03/2022	-	-	1,948.880	1,955.280	1,318.688
SINGLE NATIONAL MAXIMUM RETAIL PRICE	-	-	-	-	1,690.000
BASIC FUEL PRICE - 02/03/2022 (SA c/l)	1,259.641	1,241.146	1,331.487	1,344.004	1,288.025
PRESS RELEASE CONTRIBUTION TO BFP 02/03/2022 - 02/03/2022 (SA c/l)	1,100.270	1,085.270	1,107.630	1,114.030	1,097.128
UNIT OVER/(UNDER) RECOVERY - 02/03/2022 (SA c/l)	(159.371)	(155.876)	(223.857)	(229.974)	(190.897)
AVERAGE BASIC FUEL PRICE 25/02/2022 - 02/03/2022	1,189.449	1,170.747	1,210.687	1,218.792	1,188.700
AVERAGE UNIT OVER/(UNDER) RECOVERY 25/02/2022 - 02/03/2022	(187.159)	(183.457)	(199.807)	(204.512)	(182.322)

ANALYSIS MOVEMENT OF AVERAGE OVER/(UNDER) RECOVERY

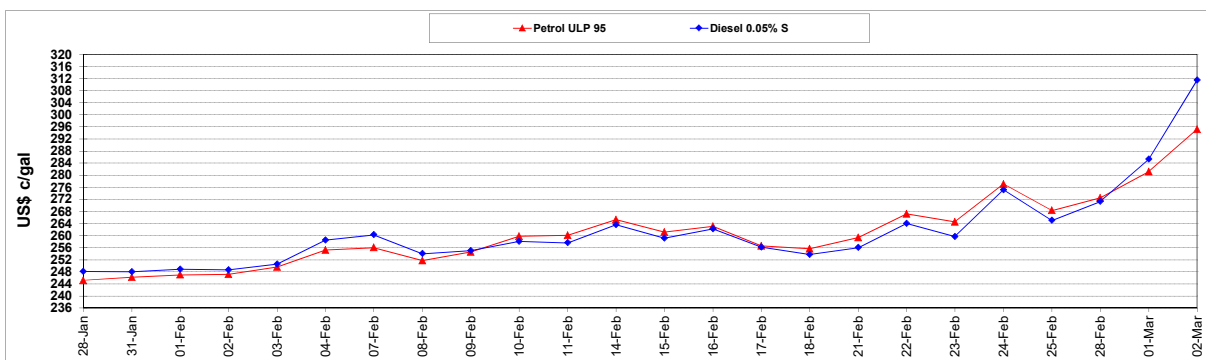
	PETROL 95	PETROL 93	DIESEL 0.05%	DIESEL 0.005%	ILL. PAR.
- MOVEMENT IN INTERNATIONAL PRODUCT PRICES	(175.936)	(172.412)	(188.385)	(193.013)	(171.106)
- MOVEMENT IN EXCHANGE RATE	(11.222)	(11.046)	(11.422)	(11.499)	(11.215)
AVERAGE UNIT OVER/(UNDER) RECOVERY 25/02/2022 - 02/03/2022	(187.159)	(183.457)	(199.807)	(204.512)	(182.322)

R/\$ EXCHANGE RATE - (R/\$15.4793 - 02/03/2022)

EXCHANGE RATE USED IN BASIC FUEL PRICE



INTERNATIONAL PRODUCT PRICES OF BASKET USED IN BASIC FUEL PRICE



BASIC FUEL PRICE IN SA CENTS PER LITRE

